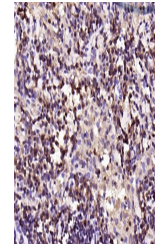


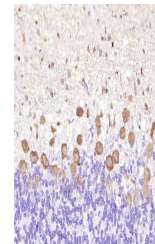
Product Datasheet

PKC Delta antibody (orb612223)

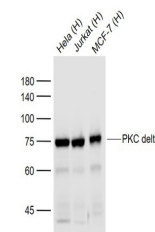
Description	PKC Delta antibody
Species/Host	Rabbit
Reactivity	Human, Mouse, Rat
Conjugation	Unconjugated
Tested Applications	IHC-P, WB
Immunogen	KLH conjugated synthetic peptide derived from human PKC delta
Target	PKC delta
Preservatives	0.01M TBS(pH7.4) with 1% rAlbumin, 0.03% Proclin300 and 50% Glycerol.
Form/Appearance	Liquid
Concentration	1mg/ml
Storage	Maintain refrigerated at 2-8°C for up to 2 weeks. For long term storage store at -20°C in small aliquots to prevent freeze-thaw cycles.
Note	For research use only
Isotype	IgG
Clonality	Recombinant
MW	77 kDa
Uniprot ID	Q05655
Dilution Range	WB=1:500-2000, IHC-P=1:50-200
Expiration Date	12 months from date of receipt.



IHC-P analysis of mouse lymphoid using P...



IHC-P analysis of rat cerebellum using P...



Western blot: Lane 1:HeLa (Human) Cell;La...