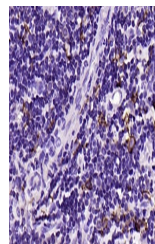


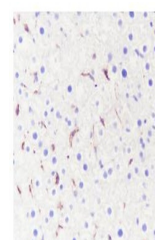
Product Datasheet

CD163 antibody (orb612214)

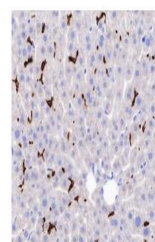
Description	CD163 antibody
Species/Host	Rabbit
Reactivity	Human, Mouse, Rat
Conjugation	Unconjugated
Tested Applications	IHC-P, WB
Immunogen	KLH conjugated synthetic peptide derived from human CD163
Target	CD163
Preservatives	0.01M TBS(pH7.4) with 1% rAlbumin, 0.03% Proclin300 and 50% Glycerol.
Form/Appearance	Liquid
Concentration	1mg/ml
Storage	Maintain refrigerated at 2-8°C for up to 2 weeks. For long term storage store at -20°C in small aliquots to prevent freeze-thaw cycles.
Note	For research use only
Isotype	IgG
Clonality	Recombinant
MW	130 kDa
Uniprot ID	Q86VB7
Dilution Range	WB=1:500-1000, IHC-P=1:100-500
Expiration Date	12 months from date of receipt.



IHC-P analysis of human tonsil using CD163 antibody



IHC-P analysis of Rat liver using CD163 antibody



IHC-P analysis of Mouse liver using CD163 antibody