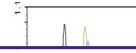

Product Datasheet

Glucocorticoid Receptor (phospho-Ser211) antibody (orb6110)

Description

Glucocorticoid Receptor (phospho-Ser211)


Species/Host

Rabbit

Reactivity

Human, Mouse

Conjugation

Unconjugated

Tested Applications

FC

Immunogen

KLH conjugated Synthesised phosphopeptide derived from human Glucocorticoid Receptor around the phosphorylation site of Ser211 (NE(p-S)PW)

Target

Phospho-Glucocorticoid Receptor (Ser211)

Preservatives

0.01M TBS(pH7.4) with 1% rAlbumin, 0.03% Proclin300 and 50% Glycerol.

Form/Appearance

Liquid

Concentration

1mg/ml

Storage

Maintain refrigerated at 2-8°C for up to 2 weeks. For long term storage store at -20°C in small aliquots to prevent freeze-thaw cycles.

Note

For research use only

Isotype

IgG

Clonality

Polyclonal

MW

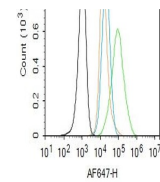
85 kDa

Uniprot ID
[P04150](#)
Dilution Range

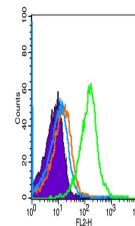
Flow-Cyt=1ug/Test, WB=1:500-2000, IHC-P=1:100-500, IHC-F=1:100-500, IF=1:100-500, ELISA=1:5000-10000

Expiration Date

12 months from date of receipt.



Flow cytometry of A549.Primary Antibody ...



Flow cytometry of Mouse spleen (Black).P...