

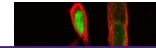
---

## Product Datasheet

### **Beta Tubulin TUBB Antibody (monoclonal, 2E11) (orb610920)**

**Description**

Beta Tubulin TUBB Antibody (monoclonal, 2E11)


**Species/Host**

Mouse

**Reactivity**

Human, Mouse, Rat

**Conjugation**

Unconjugated

**Tested**

FC, ICC, IF, WB

**Applications**
**Immunogen**

A synthetic peptide corresponding to a sequence at the C-terminus of human Beta Tubulin (383-412aa EQFTAMFRRKAFHLHWYTGEGMDEMEFTEAE), identical to the related mouse and rat sequences.

**Form/Appearance**

Lyophilized

**Storage**

Store at -20°C for one year from date of receipt. After reconstitution, at 4°C for one month. It can also be aliquotted and stored frozen at -20°C for six months. Avoid repeated freeze-thaw cycles.

**Note**

For research use only

**Application notes**

Add 0.2ml of distilled water will yield a concentration of 500µg/ml.

**Isotype**

Mouse IgG2a

**Clonality**

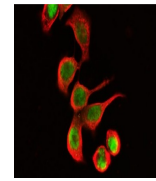
Monoclonal

**MW**

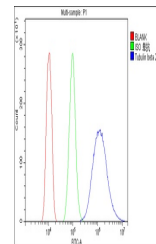
55 kDa

**Uniprot ID**
[P07437](#)
**Expiration Date**

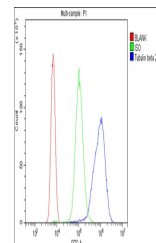
12 months from date of receipt.



IF analysis of Tubulin beta using anti-T...



Flow Cytometry analysis of HEPA1-6 cells...



Flow Cytometry analysis of U937 cells us...