
Product Datasheet

Cytochrome C/CYCS Antibody (orb610893)

Description

Cytochrome C/CYCS Antibody


Species/Host

Rabbit

Reactivity

Human, Monkey, Mouse, Rat

Conjugation

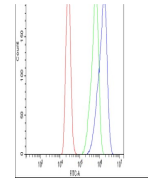
Unconjugated

Tested Applications

FC, ICC, IF, IHC, IHC-Fr, WB

Immunogen

A synthetic peptide corresponding to a sequence at the C-terminus of human Cytochrome C (91-105 aa ERADLIAYLKKATNE), identical to the related mouse and rat sequences.



Flow Cytometry analysis of CACO-2 cells ...

Form/Appearance

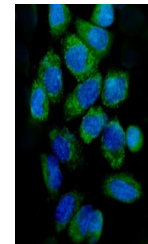
Lyophilized

Concentration

Adding 0.2 ml of distilled water will yield a concentration of 500 µg/ml.

Storage

Store at -20°C for one year from date of receipt. After reconstitution, at 4°C for one month. It can also be aliquotted and stored frozen at -20°C for six months. Avoid repeated freeze-thaw cycles.



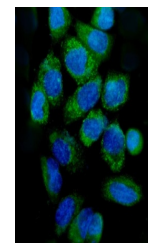
IF analysis of CYCS using anti-CYCS anti...

Note

For research use only

Application notes

Tested Species: In-house tested species with positive results. Predicted Species: Species predicted to be fit for the product based on sequence similarities. By Heat: Boiling the paraffin sections in 10mM citrate buffer, pH6.0, for 20mins is required for the staining of formalin/paraffin sections. Other applications have not been tested. Optimal dilutions should be determined by end users. . Add 0.2ml of distilled water will yield a concentration of 500ug/ml.



IF analysis of CYCS using anti-CYCS anti...

Isotype

Rabbit IgG

Clonality

Polyclonal

MW

11749 MW

Uniprot ID
[P99999](https://www.uniprot.org/uniprot/P99999)
Expiration Date

12 months from date of receipt.