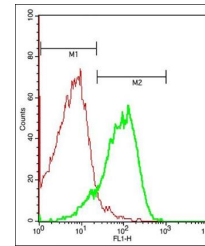


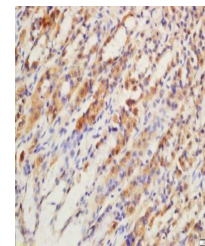
Product Datasheet

GPR15 antibody (orb6102)

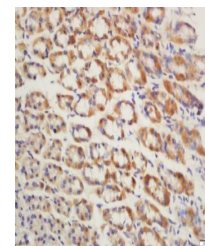
Description	GPR15 antibody
Species/Host	Rabbit
Reactivity	Human, Mouse, Rat
Conjugation	Unconjugated
Tested Applications	IF, IHC-P
Immunogen	KLH conjugated synthetic peptide derived from human GPR15 (51-150/360 aa)
Target	GPR15
Preservatives	0.01M TBS(pH7.4) with 1% rAlbumin, 0.03% Proclin300 and 50% Glycerol.
Form/Appearance	Liquid
Concentration	1mg/ml
Storage	Shipped at 4°C. Store at -20 °C for one year. Avoid repeated freeze/thaw cycles.
Note	For research use only
Isotype	IgG
Clonality	Polyclonal
MW	40 kDa
Uniprot ID	P49685
Dilution Range	IHC-P=1:100-500, IF=1:200-800, IHC-F=1:100-500, ICC=1:100-500, ELISA=1:5000-10000
Expiration Date	12 months from date of receipt.



Flow cytometric analysis of stomach cell...



Immunohistochemical staining of rat stom...



Immunohistochemical staining of Mouse st...