

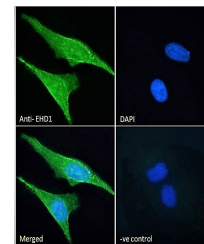
Product Datasheet

EHD1 antibody (orb609128)

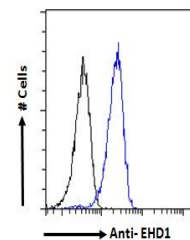
Description	Goat polyclonal antibody to EHD1
Species/Host	Goat
Reactivity	Bovine, Human, Mouse, Rat
Conjugation	Unconjugated
Tested Applications	ELISA, FC, IF, IHC, WB
Target	EHD1
Preservatives	Supplied at 0.5 mg/ml in Tris saline, 0.02% sodium azide, pH 7.3 with 0.5% bovine serum albumin. Aliquot and store at -20°C. Minimize freezing and thawing.
Storage	Aliquot and store at -20°C. Minimize freezing and thawing.
Note	For research use only
Application notes	Approx 60kDa band observed in lysates of cell line NIH3T3 (calculated MW of 60.6kDa according to Mouse NP_0342491) Preliminary testing also showed a band at approx 60kDa in Human Lymph node and Rat Kidney lysate and in HeLa cell lysate.
Protein Sequence	FSWVSKDARRKKEPC
Clonality	Polyclonal
MW	60.6; 61.9
Entrez	10938
Dilution Range	ELISA: 1:32000, WB: 0.03-0.1 µg/ml, IHC-P: 3.75 µg/ml
Expiration Date	12 months from date of receipt.



Western blot analysis of NIH3T3 cell lys...



Immunofluorescence analysis of HeLa cell...



Flow cytometric analysis of HeLa cells u...