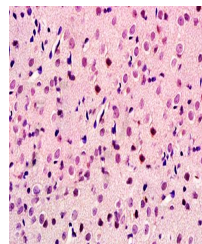


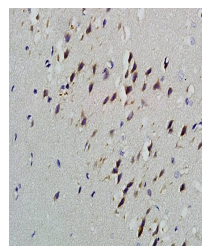
Product Datasheet

GIG8 antibody (orb6091)

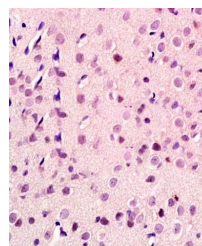
Description	GIG8 antibody
Species/Host	Rabbit
Reactivity	Rat
Conjugation	Unconjugated
Tested Applications	IHC-P
Immunogen	KLH conjugated synthetic peptide derived from human GIG8/ID2 (31-134/134 aa)
Target	ID2
Preservatives	0.01M TBS(pH7.4) with 1% rAlbumin, 0.03% Proclin300 and 50% Glycerol.
Form/Appearance	Liquid
Concentration	1mg/ml
Storage	Shipped at 4°C. Store at -20 °C for one year. Avoid repeated freeze/thaw cycles.
Note	For research use only
Isotype	IgG
Clonality	Polyclonal
MW	15 kDa
Uniprot ID	Q02363
Dilution Range	IHC-P=1:100-500
Expiration Date	12 months from date of receipt.



Paraffin-embedded rat brain tissue fixed...



IHC-P of rat brain tissue (GIG8 antibody...



Immunohistochemical analysis of formalin...