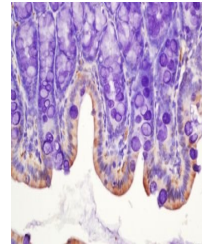


Product Datasheet

CSF1R (phospho-Tyr723) antibody (orb6082)

Description	CSF1R (phospho-Tyr723) antibody
Species/Host	Rabbit
Reactivity	Human
Conjugation	Unconjugated
Tested Applications	FC
Immunogen	KLH conjugated Synthesised phosphopeptide derived from human CSF1R around the phosphorylation site of tyrosine 723 (DT(p-Y)VE)
Target	phospho-MCSF Receptor (Tyr723)
Preservatives	0.01M TBS(pH7.4) with 1% rAlbumin, 0.03% Proclin300 and 50% Glycerol.
Form/Appearance	Liquid
Concentration	1mg/ml
Storage	Shipped at 4°C. Store at -20 °C for one year. Avoid repeated freeze/thaw cycles.
Note	For research use only
Isotype	IgG
Clonality	Polyclonal
MW	107 kDa
Uniprot ID	P07333
Dilution Range	Flow-Cyt=1ug/Test
Expiration Date	12 months from date of receipt.



Immunohistochemical analysis of formalin...