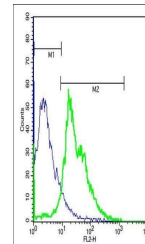


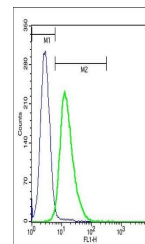
Product Datasheet

CSF1R (phospho-Tyr699) antibody (orb6081)

Description	CSF1R (phospho-Tyr699) antibody
Species/Host	Rabbit
Reactivity	Human
Conjugation	Unconjugated
Tested Applications	ELISA
Immunogen	KLH conjugated Synthesised phosphopeptide derived from human CSF1R around the phosphorylation site of Tyr699 (Ac-(p-Y)KN)
Target	phospho MCSF Receptor (Tyr699)
Preservatives	0.01M TBS(pH7.4) with 1% rAlbumin, 0.03% Proclin300 and 50% Glycerol.
Form/Appearance	Liquid
Concentration	1mg/ml
Storage	Shipped at 4°C. Store at -20 °C for one year. Avoid repeated freeze/thaw cycles.
Note	For research use only
Isotype	IgG
Clonality	Polyclonal
MW	107 kDa
Uniprot ID	P07333
Expiration Date	12 months from date of receipt.



Flow cytometric analysis of Mouse Spleno...



Flow cytometric analysis of U937 cell us...