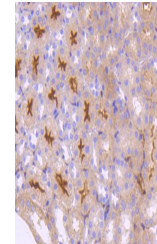


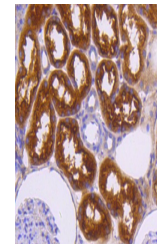
Product Datasheet

Neuropilin-1 antibody (orb608055)

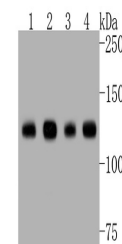
Description	Neuropilin-1 antibody
Species/Host	Rabbit
Reactivity	Human, Mouse, Rat
Conjugation	Unconjugated
Tested Applications	FC, ICC, WB
Immunogen	KLH conjugated synthetic peptide derived from human Neuropilin-1
Target	Neuropilin-1
Preservatives	0.01M TBS(pH7.4) with 1% rAlbumin, 0.03% Proclin300 and 50% Glycerol.
Form/Appearance	Liquid
Concentration	1mg/ml
Storage	Maintain refrigerated at 2-8°C for up to 2 weeks. For long term storage store at -20°C in small aliquots to prevent freeze-thaw cycles.
Note	For research use only
Isotype	IgG
Clonality	Recombinant
MW	103 kDa
Uniprot ID	O14786
Dilution Range	WB=1:500-2000, ICC=1:50, Flow-Cyt=1:50, IHC-P=1:100-500, IHC-F=1:50-200
Expiration Date	12 months from date of receipt.



IHC-P analysis of mouse kidney tissue us...



IHC-P analysis of human kidney tissue us...



Western blot: Lane 1: mouse heart; Lane 2: m...