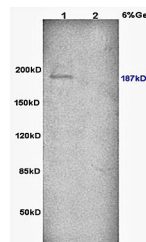


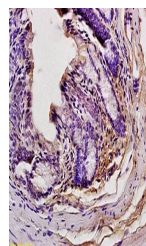
Product Datasheet

GCN2 (phospho-Thr899) antibody (orb6078)

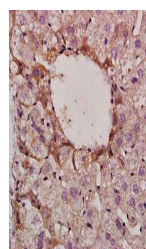
Description	GCN2 (phospho-Thr899) antibody
Species/Host	Rabbit
Reactivity	Human
Conjugation	Unconjugated
Tested Applications	ELISA, FC, WB
Immunogen	KLH conjugated Synthesised phosphopeptide derived from human GCN2 around the phosphorylation site of Thr899 (HL(p-T)GM)
Target	Phospho-GCN2 (Thr899)
Preservatives	0.01M TBS(pH7.4) with 1% rAlbumin, 0.03% Proclin300 and 50% Glycerol.
Form/Appearance	Liquid
Concentration	1mg/ml
Storage	Shipped at 4°C. Store at -20 °C for one year. Avoid repeated freeze/thaw cycles.
Note	For research use only
Isotype	IgG
Clonality	Polyclonal
MW	189 kDa
Uniprot ID	Q9P2K8
Dilution Range	Flow-Cyt=1ug/Test, WB=1:500-2000, ELISA=1:5000-10000
Expiration Date	12 months from date of receipt.



Western blot analysis of rat brain lysat...



Paraffin-embedded mouse liver tissue fix...



Paraffin-embedded mouse small intestine ...