

---

## Product Datasheet

### CD20 Antibody (orb607192)

**Description**

Recognizes a protein of 30-33kDa, which is identified as

**Species/Host**

Mouse

**Reactivity**

Human

**Conjugation**

Unconjugated

**Tested Applications**

ELISA, FACS, IF, IHC-P, WB

**Immunogen**

Amino acids 213-297 from the human protein were used as the immunogen for this CD20 antibody.

**Preservatives**

0.2 mg/ml in 1X PBS with 0.1 mg/ml rAlbumin (US sourced) and 0.05% sodium azide

**Storage**

CD20 antibody with azide can be stored at 2-8°C. The azide-free format should be aliquoted and stored at -20°C or colder.

**Note**

For research use only

**Application notes**

Optimal dilution of the antibody should be determined by the researcher.

**Formula**

0.2 mg/ml in 1X PBS with 0.1 mg/ml BSA (US sourced) and 0.05% sodium azide

**Isotype**

Mouse IgG2b, kappa

**Clonality**

Monoclonal

**Purity**

Protein G affinity chromatography

**Uniprot ID**

**P11836**

**Hazard Information**

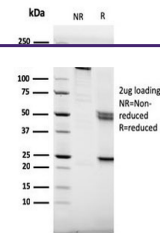
This CD20 antibody is available for research use only.

**Dilution Range**

ELISA: 2-4ug/ml (order BSA/azide-free format), Flow cytometry: 1-2ug/million cells, Immunofluorescence: 1-2ug/ml, Western blot: 1-2ug/ml, Immunohistochemistry (FFPE): 0.5-1ug/ml for 30 min at RT

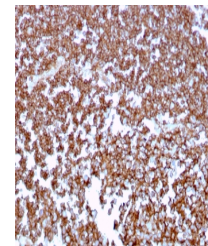
**Expiration Date**

12 months from date of receipt.

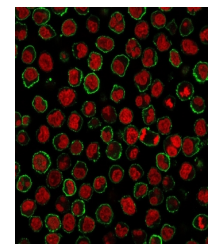


SDS-PAGE analysis of purified, BSA-free

...



IHC staining of FFPE human tonsil tissue...



Immunofluorescence staining of human Raj...