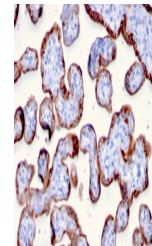


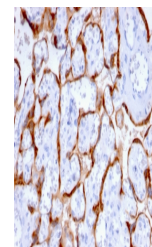
Product Datasheet

PAPP-A Antibody / Pappalysin-1 (orb607180)

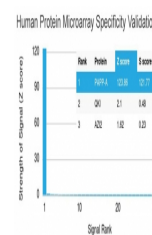
Description	Pregnancy Associated Plasma Protein (PAPP-A) is found in maternal blood that increases as pregnancy ...
Species/Host	Mouse
Reactivity	Human
Conjugation	Unconjugated
Tested Applications	IHC-P
Immunogen	A portion of amino acids 351-523 from the human protein was used as the immunogen for the PAPP-A antibody.
Preservatives	0.2 mg/ml in 1X PBS with 0.1 mg/ml rAlbumin (US sourced) and 0.05% sodium azide
Storage	Store the PAPP-A antibody at 2-8°C (with azide) or aliquot and store at -20°C or colder (without azide).
Note	For research use only
Application notes	Optimal dilution of the antibody should be determined by the researcher.
Formula	0.2 mg/ml in 1X PBS with 0.1 mg/ml BSA (US sourced) and 0.05% sodium azide
Isotype	Mouse IgG2b, kappa
Clonality	Monoclonal
Purity	Protein G affinity chromatography
Uniprot ID	Q13219
Hazard Information	This PAPP-A antibody is available for research use only.
Dilution Range	Immunohistochemistry (FFPE): 1-2ug/ml for 30 min at RT
Expiration Date	12 months from date of receipt.



IHC staining of FFPE human placenta with...



IHC staining of FFPE human placenta with...



Analysis of HuProt (TM) microarray conta...