
Product Datasheet

SERBP1 Antibody / PAI-RBP1 (orb607178)

Description

PAI-RBP1 (plasminogen activator inhibitor 1 RNA-

mRN...

Species/Host

Mouse

Reactivity

Human

Conjugation

Unconjugated

Tested Applications

IHC-P, WB

Immunogen

A recombinant human partial protein corresponding to amino acids 3-139 was used as the immunogen for the SERBP1 antibody.

Preservatives

0.2 mg/ml in 1X PBS with 0.1 mg/ml rAlbumin (US sourced) and 0.05% sodium azide

Storage

Store the SERBP1 antibody at 2-8°C (with azide) or aliquot and store at -20°C or colder (without azide).

Note

For research use only

Application notes

Optimal dilution of the antibody should be determined by the researcher.

Formula

0.2 mg/ml in 1X PBS with 0.1 mg/ml BSA (US sourced) and 0.05% sodium azide

Isotype

Mouse IgG2c, kappa

Clonality

Monoclonal

Purity

Protein G affinity chromatography

Uniprot ID
Q8NC51
Hazard Information

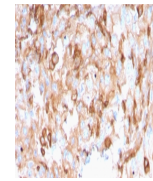
This SERBP1 antibody is available for research use only.

Dilution Range

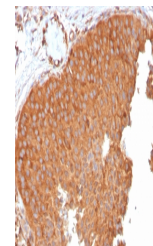
Immunohistochemistry (FFPE): 1-2ug/ml for 30 min at RT, Western blot: 1-2ug/ml

Expiration Date

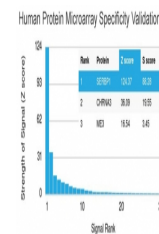
12 months from date of receipt.



IHC testing of FFPE human kidney with SERBP1 antibody.



IHC testing of FFPE human urothelial carcinoma with SERBP1 antibody.



Analysis of HuProt (TM) microarray containing SERBP1.