

Product Datasheet

SERBP1 Antibody / PAI-RBP1 (orb607174)

Description

PAI-RBP1 (plasminogen activator inhibitor 1 RNA-



mRN...

Species/Host

Mouse

Reactivity

Human

Conjugation

Unconjugated

Tested Applications

IHC-P, WB

Immunogen

A recombinant human partial protein corresponding to amino acids 3-139 was used as the immunogen for the SERBP1 antibody.

Preservatives

0.2 mg/ml in 1X PBS with 0.1 mg/ml rAlbumin (US sourced) and 0.05% sodium azide

Storage

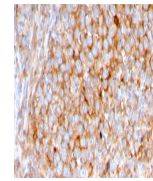
Store the SERBP1 antibody at 2-8°C (with azide) or aliquot and store at -20°C or colder (without azide).

Note

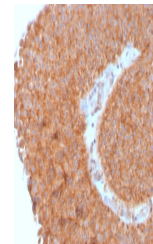
For research use only

Application notes

Optimal dilution of the SERBP1 antibody should be determined by the researcher.1. The prediluted format is supplied in a dropper bottle and is optimized for use in IHC. After epitope retrieval step (if required), drip mAb solution onto the tissue section and incubate at RT for 30 min.



IHC testing of FFPE human urothelial carcinoma...



IHC testing of FFPE human urothelial carcinoma...

Formula

0.2 mg/ml in 1X PBS with 0.1 mg/ml BSA (US sourced) and 0.05% sodium azide

Isotype

Mouse IgG2b, kappa

Clonality

Monoclonal

Purity

Protein G affinity chromatography

Uniprot ID
[Q8NC51](#)
Hazard Information

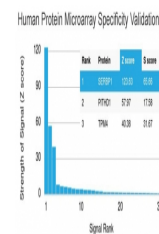
This SERBP1 antibody is available for research use only.

Dilution Range

Immunohistochemistry (FFPE): 1-2ug/ml for 30 min at RT, Western blot: 1-2ug/ml

Expiration Date

12 months from date of receipt.



Analysis of HuProt (TM) microarray containing...