

---

## Product Datasheet

### **PAPP-A Antibody / Pappalysin-1 (orb607168)**

**Description**

Pregnancy Associated Plasma Protein (PAPP-A) is


**Species/Host**

Mouse

**Reactivity**

Human

**Conjugation**

Unconjugated

**Tested Applications**

IHC-P

IHC staining of FFPE human placenta with...

**Immunogen**

A portion of amino acids 351-523 from the human protein was used as the immunogen for the PAPP-A antibody.

**Preservatives**

0.2 mg/ml in 1X PBS with 0.1 mg/ml rAlbumin (US sourced) and 0.05% sodium azide

**Storage**

Store the PAPP-A antibody at 2-8°C (with azide) or aliquot and store at -20°C or colder (without azide).

**Note**

For research use only

**Application notes**

Optimal dilution of the PAPP-A antibody should be determined by the researcher.1. The prediluted format is supplied in a dropper bottle and is optimized for use in IHC. After epitope retrieval step (if required), drip mAb solution onto the tissue section and incubate at RT for 30 min.

IHC staining of FFPE human placenta with...

**Formula**

0.2 mg/ml in 1X PBS with 0.1 mg/ml BSA (US sourced) and 0.05% sodium azide

**Isotype**

Mouse IgG2b, kappa

**Clonality**

Monoclonal

**Purity**

Protein G affinity chromatography

**Uniprot ID**

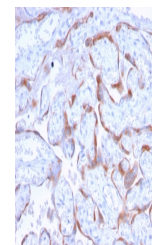
[Q13219](#)

**Hazard Information**

This PAPP-A antibody is available for research use only.

**Dilution Range**

Immunohistochemistry (FFPE): 1-2ug/ml for 30 min at RT



IHC staining of FFPE human placenta with...

**Expiration Date**

12 months from date of receipt.