
Product Datasheet

Nucleophosmin Antibody / NPM1 (orb607165)

Description

Recognizes a 33kDa glycoprotein, identified as


Species/Host

Mouse

Reactivity

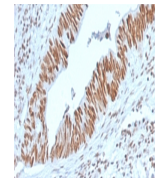
Human

Conjugation

Unconjugated

Tested Applications

ELISA, IHC-P



IHC staining of FFPE human colon carcino...

Immunogen

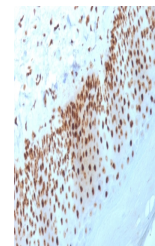
A portion of amino acids 185-287 from the human protein was used as the immunogen for the Nucleophosmin antibody.

Preservatives

0.2 mg/ml in 1X PBS with 0.1 mg/ml rAlbumin (US sourced) and 0.05% sodium azide

Storage

Store the Nucleophosmin antibody at 2-8°C (with azide) or aliquot and store at -20°C or colder (without azide).



IHC staining of FFPE human basal cell ca...

Note

For research use only

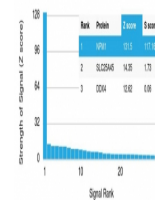
Application notes

Optimal dilution of the Nucleophosmin antibody should be determined by the researcher.1. The prediluted format is supplied in a dropper bottle and is optimized for use in IHC. After epitope retrieval step (if required), drip mAb solution onto the tissue section and incubate at RT for 30 min.

Formula

0.2 mg/ml in 1X PBS with 0.1 mg/ml BSA (US sourced) and 0.05% sodium azide

Human Protein Microarray Specificity Validation


Isotype

Mouse IgG1, kappa

Clonality

Monoclonal

Purity

Protein G affinity chromatography

Uniprot ID

P06748

Analysis of HuProt (TM) microarray conta...

Hazard Information

This Nucleophosmin antibody is available for research use only.

Dilution Range

ELISA: 2-4ug/ml (order BSA/azide-free format), Immunohistochemistry (FFPE): 1-2ug/ml for 30 min at RT

Expiration Date

12 months from date of receipt.