
Product Datasheet

Pan-HLA Antibody (MHC II) (orb607160)

Description

Reacts with a common epitope of human major



DQ ...

Species/Host

Rabbit

Reactivity

Human

Conjugation

Unconjugated

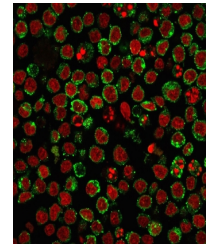
Tested Applications

ELISA, FACS, IF, IHC-P, WB

Immunofluorescence staining of human Raj...

Immunogen

The non-T, non-B human acute lymphoblastic leukemia REH6 cell line was used as the immunogen for the Pan-HLA antibody.



Immunofluorescence staining of human Ram...

Preservatives

0.2 mg/ml in 1X PBS with 0.1 mg/ml rAlbumin (US sourced) and 0.05% sodium azide

Storage

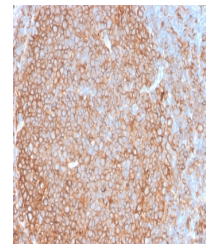
Store the Pan-HLA antibody at 2-8°C (with azide) or aliquot and store at -20°C or colder (without azide).

Note

For research use only

Application notes

Optimal dilution of the Pan-HLA antibody should be determined by the researcher.1. The prediluted format is supplied in a dropper bottle and is optimized for use in IHC. After epitope retrieval step (if required), drip mAb solution onto the tissue section and incubate at RT for 30 min.



IHC testing of FFPE human tonsil tissue

Formula

0.2 mg/ml in 1X PBS with 0.1 mg/ml BSA (US sourced) and 0.05% sodium azide

Isotype

Rabbit IgG

Clonality

Monoclonal

Purity

Protein A affinity chromatography

Uniprot ID

P01909, P01920, P01903, P04440, P01908

Hazard Information

This Pan-HLA antibody is available for research use only.

Dilution Range

ELISA: 2-5ug/ml (order BSA/sodium azide-free format),Flow cytometry: 1-2ug/million cells,Immunofluorescence: 1-2ug/ml,Western blot: 1-2ug/ml,Immunohistochemistry (FFPE): 1-2ug/ml for 30 min at RT

Expiration Date

12 months from date of receipt.