

---

## Product Datasheet

### TIM-3 Antibody / HAVCR2 (orb607157)

**Description**

TIMs are type I transmembrane glycoproteins with one Ig-


**Species/Host**

Mouse

**Reactivity**

Human

**Conjugation**

Unconjugated

**Tested Applications**

ELISA, IHC-P

IHC staining of FFPE human adrenal gland...

**Immunogen**

A recombinant fragment of human TIM3 protein within amino acids 22-202 was used as the immunogen for the TIM3 antibody.

**Preservatives**

0.2 mg/ml in 1X PBS with 0.1 mg/ml rAlbumin (US sourced) and 0.05% sodium azide

**Storage**

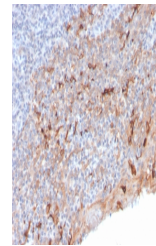
Store the TIM3 antibody at 2-8°C (with azide) or aliquot and store at -20°C or colder (without azide).

**Note**

For research use only

**Application notes**

Optimal dilution of the TIM3 antibody should be determined by the researcher.1. The prediluted format is supplied in a dropper bottle and is optimized for use in IHC. After epitope retrieval step (if required), drip mAb solution onto the tissue section and incubate at RT for 30 min.



IHC staining of FFPE human tonsil with T...

**Formula**

0.2 mg/ml in 1X PBS with 0.1 mg/ml BSA (US sourced) and 0.05% sodium azide

**Isotype**

Mouse IgG2a, kappa

**Clonality**

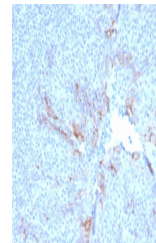
Monoclonal

**Purity**

Protein G affinity chromatography

**Uniprot ID**

[Q8TDQ0](#)



IHC staining of FFPE human tonsil with T...

**Hazard Information**

This TIM3 antibody is available for research use only.

**Dilution Range**

ELISA: order BSA/sodium azide-free format for coating, Immunohistochemistry (FFPE): 1-2ug/ml for 30 min at RT

**Expiration Date**

12 months from date of receipt.