

---

## Product Datasheet

**PD-L2 Antibody / Programmed death ligand 2 /  
CD273 (orb607156)**

**Description**

Recognizes a protein identified as PD-L2 (same

(CD80) or B7...

**Species/Host**

Mouse

**Reactivity**

Human

**Conjugation**

Unconjugated

**Tested Applications**

ELISA, FACS, IF, WB

**Immunogen**

A recombinant fragment of human PD-L2 protein within amino acids 27-220 was used as the immunogen for the PD-L2 antibody.

**Preservatives**

0.2 mg/ml in 1X PBS with 0.1 mg/ml rAlbumin (US sourced) and 0.05% sodium azide

**Storage**

Store the PD-L2 antibody at 2-8°C (with azide) or aliquot and store at -20°C or colder (without azide).

**Note**

For research use only

**Application notes**

Optimal dilution of the PD-L2 antibody should be determined by the researcher.

**Formula**

0.2 mg/ml in 1X PBS with 0.1 mg/ml BSA (US sourced) and 0.05% sodium azide

**Isotype**

Mouse IgG1, kappa

**Clonality**

Monoclonal

**Purity**

Protein G affinity chromatography

**Uniprot ID**

[Q9BQ51](#)

**Hazard Information**

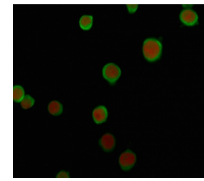
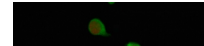
This PD-L2 antibody is available for research use only.

**Dilution Range**

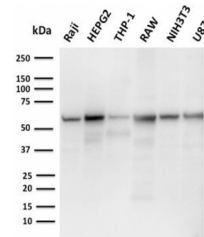
ELISA (order BSA/sodium azide-free format for coating), Flow cytometry: 1-2ug/million cells, Immunofluorescence: 1-2ug/ml, Western blot: 1-2ug/ml

**Expiration Date**

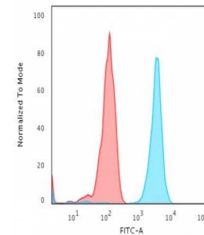
12 months from date of receipt.



Immunofluorescent staining of human Jurkat...



Western blot testing of 1) human Raji, 2...



Flow cytometry testing of human Jurkat c...