
Product Datasheet

VISTA Antibody / GI24 (orb607154)

Description

VISTA / GI24 is a transmembrane protein expressed in


Species/Host

Mouse

Reactivity

Human

Conjugation

Unconjugated

Tested Applications

ELISA, IHC-P

Immunogen

A recombinant full-length human VISTA protein was used as the immunogen for the VISTA antibody.

Preservatives

0.2 mg/ml in 1X PBS with 0.1 mg/ml rAlbumin (US sourced) and 0.05% sodium azide

Storage

Store the VISTA antibody at 2-8°C (with azide) or aliquot and store at -20°C or colder (without azide).

Note

For research use only

Application notes

Optimal dilution of the VISTA antibody should be determined by the researcher.1. The prediluted format is supplied in a dropper bottle and is optimized for use in IHC. After epitope retrieval step (if required), drip mAb solution onto the tissue section and incubate at RT for 30 min.

Formula

0.2 mg/ml in 1X PBS with 0.1 mg/ml BSA (US sourced) and 0.05% sodium azide

Isotype

Mouse IgG2b, kappa

Clonality

Monoclonal

Purity

Protein G affinity chromatography

Uniprot ID

[Q9H7M9](#)

Hazard Information

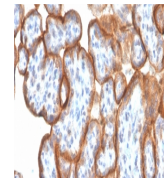
This VISTA antibody is available for research use only.

Dilution Range

ELISA (order BSA/sodium azide-free format for coating), Immunohistochemistry (FFPE): 1-2ug/ml for 30 min at RT

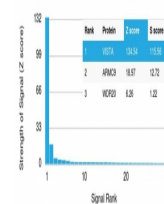
Expiration Date

12 months from date of receipt.

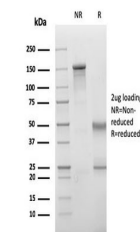


IHC staining of FFPE human placenta with...

Human Protein Microarray Specificity Validation



Analysis of HuProt (TM) microarray conta...



SDS-PAGE analysis of purified, BSA-free ...