

Product Datasheet

Synaptophysin Antibody (orb607152)

Description

This monospecific monoclonal antibody recognizes a


Species/Host

Mouse

Reactivity

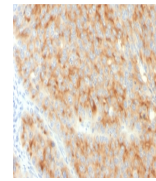
Human

Conjugation

Unconjugated

Tested Applications

IHC-P



IHC staining of FFPE human pancreatic ca...

Immunogen

A recombinant human Synaptophysin protein fragment within amino acids 224-313 was used as the immunogen for the Synaptophysin antibody.

Preservatives

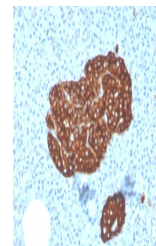
0.2 mg/ml in 1X PBS with 0.1 mg/ml rAlbumin (US sourced) and 0.05% sodium azide

Storage

Store the Synaptophysin antibody at 2-8°C (with azide) or aliquot and store at -20°C or colder (without azide).

Note

For research use only



IHC staining of FFPE human pancreas with...

Application notes

Optimal dilution of the Synaptophysin antibody should be determined by the researcher.1. The prediluted format is supplied in a dropper bottle and is optimized for use in IHC. After epitope retrieval step (if required), drip mAb solution onto the tissue section and incubate at RT for 30 min.

Formula

0.2 mg/ml in 1X PBS with 0.1 mg/ml BSA (US sourced) and 0.05% sodium azide

Isotype

Mouse IgG1, kappa

Clonality

Monoclonal

Purity

Protein G affinity chromatography

Uniprot ID

[P08247](#)

Hazard Information

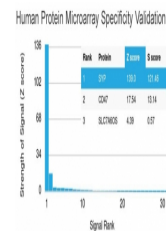
This Synaptophysin antibody is available for research use only.

Dilution Range

Immunohistochemistry (FFPE): 1-2ug/ml for 30 min at RT

Expiration Date

12 months from date of receipt.



Analysis of HuProt (TM) microarray conta...