
Product Datasheet

Cytokeratin 5 Antibody / KRT5 (orb607143)

Description

This MAb recognizes a protein of 58kDa, which is


Species/Host

Mouse

Reactivity

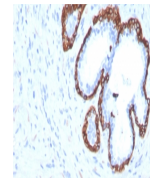
Human

Conjugation

Unconjugated

Tested Applications

IHC-P



IHC staining of FFPE human prostate carc...

Immunogen

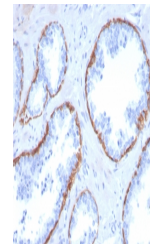
A recombinant human Cytokeratin 5 protein fragment within amino acids 316-590 was used as the immunogen for the Cytokeratin 5 antibody.

Preservatives

0.2 mg/ml in 1X PBS with 0.1 mg/ml rAlbumin (US sourced) and 0.05% sodium azide

Storage

Store the Cytokeratin 5 antibody at 2-8°C (with azide) or aliquot and store at -20°C or colder (without azide).


Note

For research use only

Application notes

Optimal dilution of the Cytokeratin 5 antibody should be determined by the researcher.1. The prediluted format is supplied in a dropper bottle and is optimized for use in IHC. After epitope retrieval step (if required), drip mAb solution onto the tissue section and incubate at RT for 30 min.

IHC staining of FFPE human prostate carc...

Formula

0.2 mg/ml in 1X PBS with 0.1 mg/ml BSA (US sourced) and 0.05% sodium azide

Isotype

Mouse IgG1, kappa

Clonality

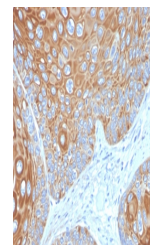
Monoclonal

Purity

Protein G affinity chromatography

Uniprot ID

P13647



IHC staining of FFPE human cervical carc...

Hazard Information

This Cytokeratin 5 antibody is available for research use only.

Dilution Range

Immunohistochemistry (FFPE): 1-2ug/ml for 30 min at RT

Expiration Date

12 months from date of receipt.