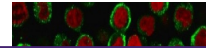

Product Datasheet

CD137 Antibody / 4-1BB / TNFRSF9 (orb607142)

Description

CD137 belongs to the tumor necrosis factor



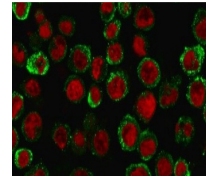
to T ...

Species/Host

Mouse

Reactivity

Human



Immunofluorescence staining of MeOH-fixed...

Conjugation

Unconjugated

Tested Applications

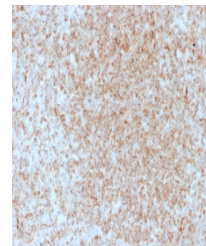
ELISA, FACS, IF, IHC-P, WB

Immunogen

A recombinant human CD137 protein fragment within amino acids 19-188 was used as the immunogen for the CD137 antibody.

Preservatives

0.2 mg/ml in 1X PBS with 0.1 mg/ml rAlbumin (US sourced) and 0.05% sodium azide



IHC staining of FFPE human spleen with C...

Storage

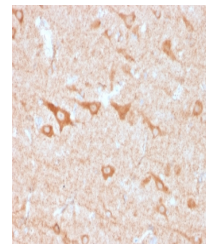
Store the CD137 antibody at 2-8°C (with azide) or aliquot and store at -20°C or colder (without azide).

Note

For research use only

Application notes

Optimal dilution of the CD137 antibody should be determined by the researcher.1. The prediluted format is supplied in a dropper bottle and is optimized for use in IHC. After epitope retrieval step (if required), drip mAb solution onto the tissue section and incubate at RT for 30 min.



IHC staining of FFPE human cerebellum wi...

Formula

0.2 mg/ml in 1X PBS with 0.1 mg/ml BSA (US sourced) and 0.05% sodium azide

Isotype

Mouse IgG1, kappa

Clonality

Monoclonal

Purity

Protein G affinity chromatography

Uniprot ID

[Q07011](#)

Hazard Information

This CD137 antibody is available for research use only.

Dilution Range

ELISA (order BSA/sodium azide-free format for coating),Immunofluorescence: 1-2ug/ml,Flow cytometry: 1-2ug/million cells,Immunohistochemistry (FFPE): 1-2ug/ml for 30 min at RT,Western blot: 1-2ug/ml

Expiration Date

12 months from date of receipt.