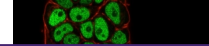

Product Datasheet

MSH6 Antibody (orb607141)

Description

The finding that mutations in DNA mismatch repair


Species/Host

Mouse

Reactivity

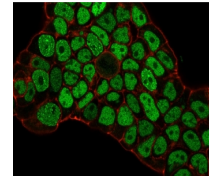
Human

Conjugation

Unconjugated

Tested Applications

ELISA, FACS, IF, IHC-P, WB



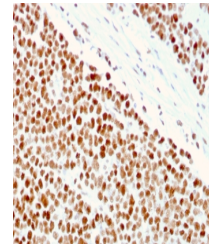
Immunofluorescence staining of PFA-fixed...

Immunogen

A recombinant human MSH6 protein fragment within amino acids 374-540 was used as the immunogen for the MSH6 antibody.

Preservatives

0.2 mg/ml in 1X PBS with 0.1 mg/ml rAlbumin (US sourced) and 0.05% sodium azide



IHC staining of FFPE human small intesti...

Storage

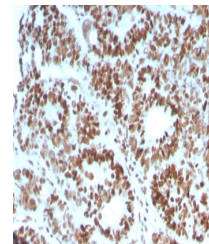
Store the MSH6 antibody at 2-8°C (with azide) or aliquot and store at -20°C or colder (without azide).

Note

For research use only

Application notes

Optimal dilution of the MSH6 antibody should be determined by the researcher.1. The prediluted format is supplied in a dropper bottle and is optimized for use in IHC. After epitope retrieval step (if required), drip mAb solution onto the tissue section and incubate at RT for 30 min.



IHC staining of FFPE human colon carcino...

Formula

0.2 mg/ml in 1X PBS with 0.1 mg/ml BSA (US sourced) and 0.05% sodium azide

Isotype

Mouse IgG2b, kappa

Clonality

Monoclonal

Purity

Protein G affinity chromatography

Uniprot ID

P52701

Hazard Information

This MSH6 antibody is available for research use only.

Dilution Range

ELISA (order BSA/sodium azide-free format for coating),Flow cytometry: 1-2ug/million cells,Immunofluorescence: 1-2ug/ml,Western blot: 1-2ug/ml,Immunohistochemistry (FFPE): 1-2ug/ml for 30 min at RT

Expiration Date

12 months from date of receipt.