
Product Datasheet

Estrogen Receptor alpha Antibody (orb607139)

Description

This monoclonal antibody is specific to estrogen



cross-r...

Species/Host

Mouse

Reactivity

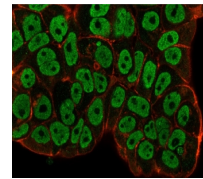
Human

Conjugation

Unconjugated

Tested Applications

FACS, IF, IHC-P



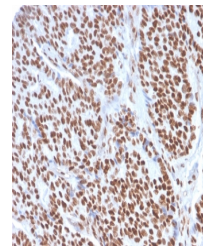
Immunofluorescence staining of human MCF...

Immunogen

A recombinant human ESR1 protein fragment within amino acids 129-312 was used as the immunogen for the Estrogen Receptor alpha antibody.

Preservatives

0.2 mg/ml in 1X PBS with 0.1 mg/ml rAlbumin (US sourced) and 0.05% sodium azide



IHC staining of FFPE human breast carcin...

Storage

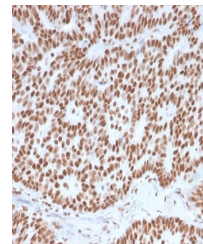
Store the Estrogen Receptor alpha antibody at 2-8°C (with azide) or aliquot and store at -20°C or colder (without azide).

Note

For research use only

Application notes

Optimal dilution of the Estrogen Receptor alpha antibody should be determined by the researcher.1. The prediluted format is supplied in a dropper bottle and is optimized for use in IHC. After epitope retrieval step (if required), drip mAb solution onto the tissue section and incubate at RT for 30 min.



IHC staining of FFPE human breast carcin...

Formula

0.2 mg/ml in 1X PBS with 0.1 mg/ml BSA (US sourced) and 0.05% sodium azide

Isotype

Mouse IgG1, kappa

Clonality

Monoclonal

Purity

Protein G affinity chromatography

Uniprot ID

P03372

Hazard Information

This Estrogen Receptor alpha antibody is available for research use only.

Dilution Range

Immunofluorescence: 1-2ug/ml, Flow cytometry: 1-2ug/million cells, Immunohistochemistry (FFPE): 1-2ug/ml for 30 min at RT

Expiration Date

12 months from date of receipt.