

---

## Product Datasheet

### Dystrophin Antibody / DMD (orb607120)

**Description**

Dystrophin-glycoprotein complex (DGC) connects the F-


**Species/Host**

Mouse

**Reactivity**

Human

**Conjugation**

Unconjugated

**Tested Applications**

ELISA, IHC-P

**Immunogen**

Amino acids 114-263 from the human protein were used as the immunogen for the Dystrophin antibody.

**Preservatives**

0.2 mg/ml in 1X PBS with 0.1 mg/ml rAlbumin (US sourced) and 0.05% sodium azide

**Storage**

Store the Dystrophin antibody at 2-8°C (with azide) or aliquot and store at -20°C or colder (without azide).

**Note**

For research use only

**Application notes**

Optimal dilution of the Dystrophin antibody should be determined by the researcher.1. The prediluted format is supplied in a dropper bottle and is optimized for use in IHC. After epitope retrieval step (if required), drip mAb solution onto the tissue section and incubate at RT for 30 min.

**Formula**

0.2 mg/ml in 1X PBS with 0.1 mg/ml BSA (US sourced) and 0.05% sodium azide

**Isotype**

Mouse IgG2a, kappa

**Clonality**

Monoclonal

**Purity**

Protein G affinity chromatography

**Uniprot ID**

**P11532**

**Hazard Information**

This Dystrophin antibody is available for research use only.

**Dilution Range**

ELISA (order BSA/sodium azide-free format for coating), Immunohistochemistry (FFPE): 1-2ug/ml for 30 min at RT

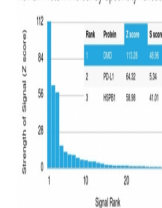
**Expiration Date**

12 months from date of receipt.

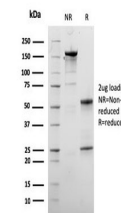


IHC staining of FFPE skeletal muscle wit...

Human Protein Microarray Specificity Validation



Analysis of HuProt (TM) microarray conta...



SDS-PAGE analysis of purified, BSA-free ...