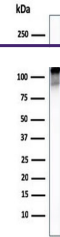

Product Datasheet

**ACTN2 Antibody / Alpha Actinin 2 / Sarcomeric
Alpha Actinin (orb607119)**

Description

Alpha actinins belong to the spectrin gene



Western blot testing of human skeletal muscle...

cytoskele...

Species/Host Mouse

Reactivity Human

Conjugation Unconjugated

Tested Applications IHC-P, WB

Immunogen Amino acids 557-692 from the human protein were used as the immunogen for this Sarcomeric Alpha Actinin antibody.

Preservatives 0.2 mg/ml in 1X PBS with 0.05% sodium azide

Storage Store the Sarcomeric Alpha Actinin antibody at 2-8°C (with azide) or aliquot and store at -20°C or colder (without azide).

Note For research use only

Application notes The optimal dilution of the Sarcomeric Alpha Actinin antibody for each application should be determined by the researcher. 1. The prediluted format is supplied in a dropper bottle and is optimized for use in IHC. After epitope retrieval step (if required), drip mAb solution onto the tissue section and incubate at RT for 30 min.



IHC staining of FFPE human cardiac muscle...

Formula 0.2 mg/ml in 1X PBS with 0.05% sodium azide

Isotype Mouse IgG1, kappa

Clonality Monoclonal

Purity Protein G affinity chromatography

Uniprot ID [P35609](#)

Hazard Information This Sarcomeric Alpha Actinin antibody is available for research use only.

Dilution Range Western blot: 1-2ug/ml, Immunohistochemistry (FFPE): 1-2ug/ml for 30 min at RT

Expiration Date 12 months from date of receipt.



IHC staining of FFPE human skeletal muscle...