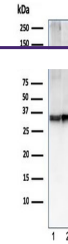

Product Datasheet

**CD47 Antibody / IAP / Integrin Associated Protein
(orb607116)**

Description

This antibody reacts with Ig domain of CD47



Western blot testing of human 1) U-87 MG...

prot...

Species/Host Mouse

Reactivity Human

Conjugation Unconjugated

Tested Applications ELISA, IHC-P, WB

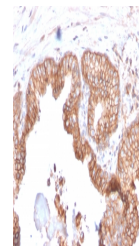
Immunogen Amino acids 18-135 from the human protein were used as the immunogen for the CD47 antibody.

Preservatives 0.2 mg/ml in 1X PBS with 0.1 mg/ml rAlbumin (US sourced) and 0.05% sodium azide

Storage Store the CD47 antibody at 2-8°C (with azide) or aliquot and store at -20°C or colder (without azide).

Note For research use only

Application notes Optimal dilution of the CD47 antibody should be determined by the researcher.1. The prediluted format is supplied in a dropper bottle and is optimized for use in IHC. After epitope retrieval step (if required), drip mAb solution onto the tissue section and incubate at RT for 30 min.



IHC staining of FFPE human prostate carc...

Formula 0.2 mg/ml in 1X PBS with 0.1 mg/ml BSA (US sourced) and 0.05% sodium azide

Isotype Mouse IgG2c, kappa

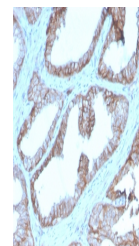
Clonality Monoclonal

Purity Protein G affinity chromatography

Uniprot ID [Q08722](#)

Hazard Information This CD47 antibody is available for research use only.

Dilution Range ELISA (order BSA/sodium azide-free format for coating),Western blot: 1-2ug/ml for 60 min at RT,Immunohistochemistry (FFPE): 1-2ug/ml for 30 min at RT



IHC staining of FFPE human prostate carc...

Expiration Date 12 months from date of receipt.