

---

## Product Datasheet

### OX40 Antibody / CD134 (orb607114)

**Description**

This MAb recognizes a protein of 43kDa, identified as


**Species/Host**

Mouse

**Reactivity**

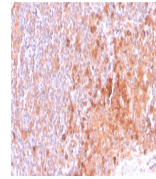
Human

**Conjugation**

Unconjugated

**Tested Applications**

ELISA, FACS, IF, IHC-P



IHC staining of FFPE human tonsil tissue...

**Immunogen**

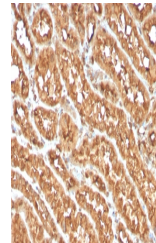
A portion of amino acids 95-205 from the human protein was used as the immunogen for the OX40 antibody.

**Preservatives**

0.2 mg/ml in 1X PBS with 0.1 mg/ml rAlbumin (US sourced) and 0.05% sodium azide

**Storage**

Store the OX40 antibody at 2-8°C (with azide) or aliquot and store at -20°C or colder (without azide).



IHC staining of FFPE human renal cell ca...

**Note**

For research use only

**Application notes**

Optimal dilution of the OX40 antibody should be determined by the researcher.1. The prediluted format is supplied in a dropper bottle and is optimized for use in IHC. After epitope retrieval step (if required), drip mAb solution onto the tissue section and incubate at RT for 30 min.

**Formula**

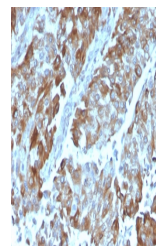
0.2 mg/ml in 1X PBS with 0.1 mg/ml BSA (US sourced) and 0.05% sodium azide

**Isotype**

Mouse IgG2c, kappa

**Clonality**

Monoclonal



IHC staining of FFPE human renal cell ca...

**Purity**

Protein G affinity chromatography

**Uniprot ID**

**P43489**

**Hazard Information**

This OX40 antibody is available for research use only.

**Dilution Range**

ELISA (order BSA/sodium azide-free format for coating),Flow cytometry: 1-2ug/million cells,Immunofluorescence: 1-2ug/ml,Immunohistochemistry (FFPE): 1-2ug/ml for 30 min at RT

**Expiration Date**

12 months from date of receipt.