
Product Datasheet

**ACTN2 Antibody / Alpha Actinin 2 / Sarcomeric
Alpha Actinin (orb607109)**

Description

Alpha actinins belong to the spectrin gene



cytoskele...

Species/Host

Mouse

Reactivity

Human

Conjugation

Unconjugated

Tested Applications

IHC-P, WB

IHC staining of FFPE human skeletal musc...

Immunogen

Amino acids 557-692 from the human protein were used as the immunogen for this Sarcomeric Alpha Actinin antibody.

Preservatives

0.2 mg/ml in 1X PBS with 0.05% sodium azide

Storage

Store the Sarcomeric Alpha Actinin antibody at 2-8°C (with azide) or aliquot and store at -20°C or colder (without azide).


Note

For research use only

Application notes

The optimal dilution of the Sarcomeric Alpha Actinin antibody for each application should be determined by the researcher. 1. The prediluted format is supplied in a dropper bottle and is optimized for use in IHC. After epitope retrieval step (if required), drip mAb solution onto the tissue section and incubate at RT for 30 min.

IHC staining of FFPE human skeletal musc...

Formula

0.2 mg/ml in 1X PBS with 0.05% sodium azide

Isotype

Mouse IgG2b, kappa

Clonality

Monoclonal

Purity

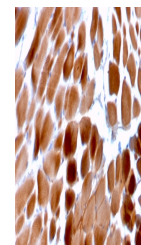
Protein G affinity chromatography

Uniprot ID

P35609

Hazard Information

This Sarcomeric Alpha Actinin antibody is available for research use only.



IHC staining of FFPE human cardiac muscl...

Dilution Range

Western blot: 1-2ug/ml, Immunohistochemistry (FFPE): 1-2ug/ml for 30 min at RT

Expiration Date

12 months from date of receipt.