

---

## Product Datasheet

**CD47 Antibody / IAP / Integrin Associated Protein  
(orb607105)**

**Description**

This antibody reacts with Ig domain of CD47 protein.

**Species/Host**

Mouse

**Reactivity**

Human

**Conjugation**

Unconjugated

**Tested Applications**

FACS, IF, IHC-P

**Immunogen**

Amino acids 18-135 from the human protein were used as the immunogen for the CD47 antibody.

**Preservatives**

0.2 mg/ml in 1X PBS with 0.1 mg/ml rAlbumin (US sourced) and 0.05% sodium azide

**Storage**

Store the CD47 antibody at 2-8°C (with azide) or aliquot and store at -20°C or colder (without azide).

**Note**

For research use only

**Application notes**

Optimal dilution of the CD47 antibody should be determined by the researcher.1. The prediluted format is supplied in a dropper bottle and is optimized for use in IHC. After epitope retrieval step (if required), drip mAb solution onto the tissue section and incubate at RT for 30 min.

**Formula**

0.2 mg/ml in 1X PBS with 0.1 mg/ml BSA (US sourced) and 0.05% sodium azide

**Isotype**

Mouse IgG1, kappa

**Clonality**

Monoclonal

**Purity**

Protein G affinity chromatography

**Uniprot ID**

[Q08722](#)

**Hazard Information**

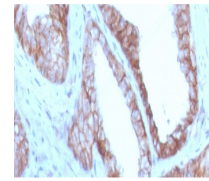
This CD47 antibody is available for research use only.

**Dilution Range**

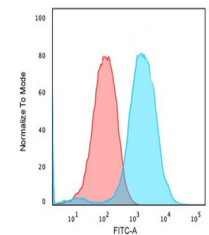
Immunofluorescence/Immunocytochemistry: 1-2ug/ml,Flow cytometry: 1-2ug/million cells,Immunohistochemistry (FFPE): 1-2ug/ml for 30 min at RT,Prediluted IHC only format: incubate for 30 min at RT (1)

**Expiration Date**

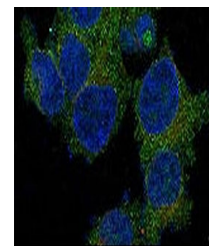
12 months from date of receipt.



IHC staining of FFPE human prostate carc...



Flow cytometry testing of human MCF7 cel...



Immunofluorescent staining of paraformal...