
Product Datasheet

**Folate Hydrolase 1 Antibody / FOLH1 / PSMA
(orb606964)**

Description

Folate hydrolase 1 (FOLH1), also known as Prostate-


Species/Host

Mouse

Reactivity

Bovine, Canine, Human, Rat

Conjugation

Unconjugated

Tested Applications

IHC-P, WB

IHC testing of FFPE human prostate cancer...

Immunogen

A portion of amino acids 232-433 from the human protein was used as the immunogen for this FOLH1 antibody.

Preservatives

0.2 mg/ml in 1X PBS with 0.1 mg/ml rAlbumin (US sourced) and 0.05% sodium azide

Storage

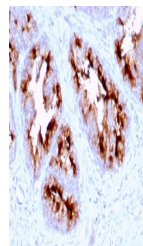
Store the FOLH1 antibody at 2-8°C (with azide) or aliquot and store at -20°C or colder (without azide).

Note

For research use only

Application notes

Optimal dilution of the FOLH1 antibody should be determined by the researcher.1. The prediluted format is supplied in a dropper bottle and is optimized for use in IHC. After epitope retrieval step (if required), drip mAb solution onto the tissue section and incubate at RT for 30 min.



IHC testing of FFPE human prostate carcinoma...

Formula

0.2 mg/ml in 1X PBS with 0.1 mg/ml BSA (US sourced) and 0.05% sodium azide

Isotype

Mouse IgG2b, kappa

Clonality

Monoclonal

Purity

Protein G affinity chromatography

Uniprot ID

[Q04609](#)



Western blot testing of human LNCaP cell...

Hazard Information

This FOLH1 antibody is available for research use only.

Dilution Range

Western blot: 0.5-2ug/ml, Immunohistochemistry (FFPE): 1-2ug/ml for 30 min at RT

Expiration Date

12 months from date of receipt.