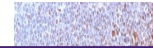

Product Datasheet

Nuclear Antigen Antibody (orb606963)

Description

This MAb is an excellent marker for all nuclei in cells in


Species/Host

Rabbit

Reactivity

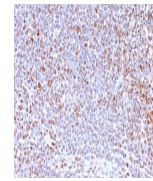
Human

Conjugation

Unconjugated

Tested Applications

IHC-P



IHC staining of FFPE human tonsil with N...

Immunogen

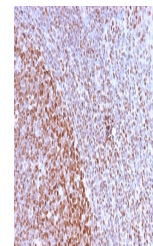
Nuclei of HL60 cells were used as the immunogen for the recombinant Nuclear Marker antibody.

Preservatives

0.2 mg/ml in 1X PBS with 0.1 mg/ml rAlbumin (US sourced) and 0.05% sodium azide

Storage

Store the recombinant Nuclear Marker antibody at 2-8°C (with azide) or aliquot and store at -20°C or colder (without azide).



IHC staining of FFPE human tonsil with N...

Note

For research use only

Application notes

Optimal dilution of the recombinant Nuclear Marker antibody should be determined by the researcher.1. The prediluted format is supplied in a dropper bottle and is optimized for use in IHC. After epitope retrieval step (if required), drip mAb solution onto the tissue section and incubate at RT for 30 min.

Formula

0.2 mg/ml in 1X PBS with 0.1 mg/ml BSA (US sourced) and 0.05% sodium azide

Isotype

Rabbit IgG, kappa

Clonality

Recombinant

Purity

Protein G affinity chromatography

Uniprot ID

Not Known

Hazard Information

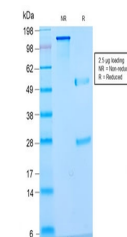
This recombinant Nuclear Marker antibody is available for research use only.

Dilution Range

Immunohistochemistry (FFPE): 0.25-0.5ug/ml for 30 min at RT

Expiration Date

12 months from date of receipt.



SDS-PAGE analysis of purified, BSA-free ...