

---

## Product Datasheet

### CD81 Antibody (orb606960)

**Description**

Recognizes a protein of 26kDa, identified as CD81 (Workshop

**Species/Host**

Rabbit

**Reactivity**

Human

**Conjugation**

Unconjugated

**Tested Applications**

ELISA, FACS, IHC-P

**Immunogen**

Recombinant full length human protein was used as the immunogen for the recombinant CD81 antibody.

**Preservatives**

0.2 mg/ml in 1X PBS with 0.1 mg/ml rAlbumin (US sourced) and 0.05% sodium azide

**Storage**

Store the recombinant CD81 antibody at 2-8°C (with azide) or aliquot and store at -20°C or colder (without azide).

**Note**

For research use only

**Application notes**

Optimal dilution of the recombinant CD81 antibody should be determined by the researcher.1. The prediluted format is supplied in a dropper bottle and is optimized for use in IHC. After epitope retrieval step (if required), drip mAb solution onto the tissue section and incubate at RT for 30 min.

**Formula**

0.2 mg/ml in 1X PBS with 0.1 mg/ml BSA (US sourced) and 0.05% sodium azide

**Isotype**

Rabbit IgG, kappa

**Clonality**

Recombinant

**Purity**

Protein A affinity chromatography

**Uniprot ID**

**P60033**

**Hazard Information**

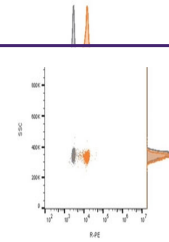
This recombinant CD81 antibody is available for research use only.

**Dilution Range**

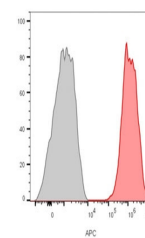
ELISA (order BSA/sodium azide-free format for coating), Immunohistochemistry: 1-2ug/ml, Flow cytometry: 0.5-1ug/million cells

**Expiration Date**

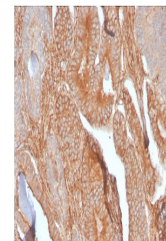
12 months from date of receipt.



Flow cytometry analysis of bead-bound ex...



Flow cytometry staining of human MCF7 ce...



IHC staining of FFPE human prostate carc...