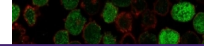

Product Datasheet

Bcl10 Antibody (orb606958)

Description

Bcl10, with an N-terminal caspase recruitment domain


Species/Host

Rabbit

Reactivity

Human

Conjugation

Unconjugated

Tested Applications

FACS, IF, IHC-P

Immunofluorescent staining of PFA-fixed ...

Immunogen

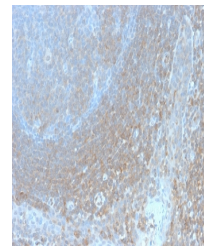
A portion of amino acids 122-168 from the human protein was used as the immunogen for this recombinant Bcl10 antibody.

Preservatives

0.2 mg/ml in 1X PBS with 0.1 mg/ml rAlbumin (US sourced) and 0.05% sodium azide

Storage

Store the recombinant Bcl10 antibody at 2-8°C (with azide) or aliquot and store at -20°C or colder (without azide).



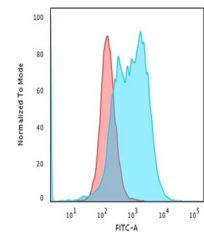
IHC staining of FFPE human tonsil with r...

Note

For research use only

Application notes

The concentration stated for each application is a general starting point. Variations in protocols, secondaries and substrates may require the recombinant Bcl10 antibody to be titrated up or down for optimal performance.1. The prediluted format is supplied in a dropper bottle and is optimized for use in IHC. After epitope retrieval step (if required), drip mAb solution onto the tissue section and incubate at RT for 30 min.



Flow cytometry staining of PFA-fixed hum...

Formula

0.2 mg/ml in 1X PBS with 0.1 mg/ml BSA (US sourced) and 0.05% sodium azide

Isotype

Rabbit IgG, kappa

Clonality

Recombinant

Purity

Protein A affinity chromatography

Hazard Information

This recombinant Bcl10 antibody is available for research use only.

Entrez

8915

Dilution Range

Flow cytometry: 1-2ug/million cells, Immunofluorescence: 1-2ug/ml, Immunohistochemistry (FFPE): 1-2ug/ml for 30 min at RT

Expiration Date

12 months from date of receipt.