

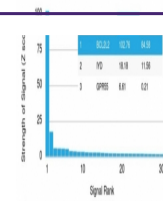
Product Datasheet

Bcl2L2 Antibody / Bcl-W (orb606954)

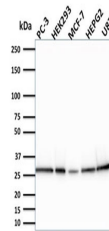
Description

Bcl2L2, also called BCLW, promotes cell survival. Blocks

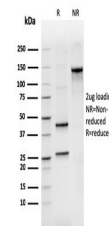
Human Protein Microarray Specificity Validation



Analysis of HuProt (TM) microarray conta...



Western blot testing of human samples wi...



SDS-PAGE analysis of purified, BSA-free ...

Species/Host	Mouse
Reactivity	Human
Conjugation	Unconjugated
Tested Applications	WB
Immunogen	Full-length recombinant human protein was used as the immunogen for this Bcl2L2 antibody.
Preservatives	0.2 mg/ml in 1X PBS with 0.1 mg/ml rAlbumin (US sourced) and 0.05% sodium azide
Storage	Store the Bcl2L2 antibody at 2-8°C (with azide) or aliquot and store at -20°C or colder (without azide).
Note	For research use only
Application notes	The concentration stated for each application is a general starting point. Variations in protocols, secondaries and substrates may require the Bcl2L2 antibody to be titrated up or down for optimal performance.1. The prediluted format is supplied in a dropper bottle and is optimized for use in IHC. After epitope retrieval step (if required), drip mAb solution onto the tissue section and incubate at RT for 30 min.
Formula	0.2 mg/ml in 1X PBS with 0.1 mg/ml BSA (US sourced) and 0.05% sodium azide
Isotype	Mouse IgG1, kappa
Clonality	Monoclonal
Purity	Protein G affinity chromatography
Uniprot ID	Q92843
Hazard Information	This Bcl2L2 antibody is available for research use only.
Dilution Range	Western blot: 1-2ug/ml
Expiration Date	12 months from date of receipt.