

---

## Product Datasheet

### AMACR / p504S Antibody (Prostate Cancer Marker) (orb606943)

**Description**

This antibody recognizes a protein of 43kDa, which is


**Species/Host**

Mouse

**Reactivity**

Human

**Conjugation**

Unconjugated

**Tested Applications**

IHC-P, WB

IHC testing of FFPE human renal carcinom...

**Immunogen**

A portion of amino acids 297-394 was used as the immunogen for the AMACR antibody.

**Preservatives**

0.2 mg/ml in 1X PBS with 0.1 mg/ml rAlbumin (US sourced) and 0.05% sodium azide

**Storage**

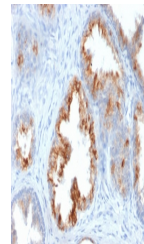
Store the AMACR antibody at 2-8°C (with azide) or aliquot and store at -20°C or colder (without azide).

**Note**

For research use only

**Application notes**

Optimal dilution of the AMACR antibody should be determined by the researcher.1. The prediluted format is supplied in a dropper bottle and is optimized for use in IHC. After epitope retrieval step (if required), drip mAb solution onto the tissue section and incubate at RT for 30 min.



IHC testing of FFPE human prostate carci...

**Formula**

0.2 mg/ml in 1X PBS with 0.1 mg/ml BSA (US sourced) and 0.05% sodium azide

**Isotype**

Mouse IgG1, kappa

**Clonality**

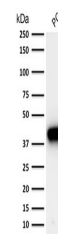
Monoclonal

**Purity**

Protein G affinity chromatography

**Uniprot ID**

**Q9UHK6**



Western blot testing of human PC-3 cell ...

**Hazard Information**

This AMACR antibody is available for research use only.

**Dilution Range**

Western blot: 0.5-1ug/ml, Immunohistochemistry (FFPE): 1-2ug/ml for 30 min at RT

**Expiration Date**

12 months from date of receipt.