
Product Datasheet

CTSD Antibody / Cathepsin D (orb606940)

Description

Cathepsin D is a ubiquitously expressed lysosomal


Species/Host

Mouse

Reactivity

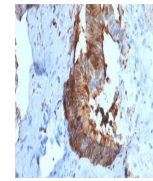
Human

Conjugation

Unconjugated

Tested Applications

IHC-P, WB



IHC testing of FFPE human renal cell car...

Immunogen

A portion of amino acids 104-250 from the human protein was used as the immunogen for the Cathepsin D antibody.

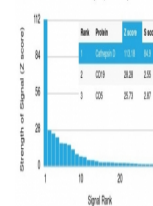
Preservatives

0.2 mg/ml in 1X PBS with 0.1 mg/ml rAlbumin (US sourced) and 0.05% sodium azide

Storage

Store the Cathepsin D antibody at 2-8°C (with azide) or aliquot and store at -20°C or colder (without azide).

Human Protein Microarray Specificity Validation


Note

For research use only

Application notes

Optimal dilution of the Cathepsin D antibody to be determined by the researcher.1. The prediluted format is supplied in a dropper bottle and is optimized for use in IHC. After epitope retrieval step (if required), drip mAb solution onto the tissue section and incubate at RT for 30 min.

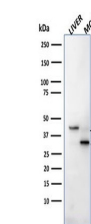
Analysis of HuProt (TM) microarray conta...

Formula

0.2 mg/ml in 1X PBS with 0.1 mg/ml BSA (US sourced) and 0.05% sodium azide

Isotype

Mouse IgG1, kappa


Clonality

Monoclonal

Purity

Protein G affinity chromatography

Western blot testing of human samples wi...

Uniprot ID

P07339

Hazard Information

This Cathepsin D antibody is available for research use only.

Dilution Range

Immunohistochemistry (FFPE): 1-2ug/ml for 30 min at RT, Western blot: 1-2ug/ml

Expiration Date

12 months from date of receipt.