
Product Datasheet

Mitochondrial Marker Antibody (orb606937)

Description

This MAb recognizes a 60kDa antigen associated with


Species/Host

Rabbit

Reactivity

Human

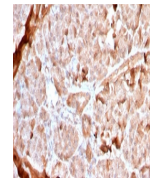
Conjugation

Unconjugated

Tested Applications

IHC-P

IHC staining of FFPE human pancreas with...


Immunogen

A semi-purified mitochondria preparation was used as the immunogen for this recombinant Mitochondrial Marker antibody.

Preservatives

0.2 mg/ml in 1X PBS with 0.1 mg/ml rAlbumin (US sourced) and 0.05% sodium azide

Storage

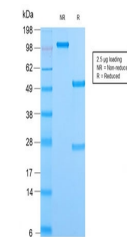
Store the recombinant Mitochondrial Marker antibody at 2-8°C (with azide) or aliquot and store at -20°C or colder (without azide).

Note

For research use only

Application notes

The concentration stated for each application is a general starting point. Variations in protocols, secondaries and substrates may require the recombinant Mitochondrial Marker antibody to be titrated up or down for optimal performance.1. The prediluted format is supplied in a dropper bottle and is optimized for use in IHC. After epitope retrieval step (if required), drip mAb solution onto the tissue section and incubate at RT for 30 min.



SDS-PAGE analysis of purified, BSA-free ...

Formula

0.2 mg/ml in 1X PBS with 0.1 mg/ml BSA (US sourced) and 0.05% sodium azide

Isotype

Rabbit IgG, kappa

Clonality

Recombinant

Purity

Protein A affinity chromatography

Uniprot ID

Unknown

Hazard Information

This recombinant Mitochondrial Marker antibody is available for research use only.

Dilution Range

Immunohistochemistry (FFPE): 1-2ug/ml for 30 min at RT

Expiration Date

12 months from date of receipt.