
Product Datasheet

DOG1 Antibody / TMEM16A / ANO1 (orb606924)

Description

Expression of DOG1/ANO1/TMEM16A protein is



(GIST's),...

Species/Host

Rabbit

Reactivity

Human

Conjugation

Unconjugated

Tested Applications

IHC-P

 IHC testing of
FFPE human
gastrointestin...

Immunogen

A portion of amino acids 2-101 from the human protein was used as the immunogen for this recombinant TMEM16A antibody.

Preservatives

0.2 mg/ml in 1X PBS with 0.1 mg/ml rAlbumin (US sourced) and 0.05% sodium azide

Storage

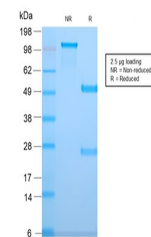
Store the recombinant TMEM16A antibody at 2-8°C (with azide) or aliquot and store at -20°C or colder (without azide).

Note

For research use only

Application notes

The concentration stated for each application is a general starting point. Variations in protocols, secondaries and substrates may require the recombinant TMEM16A antibody to be titrated up or down for optimal performance.1. The prediluted format is supplied in a dropper bottle and is optimized for use in IHC. After epitope retrieval step (if required), drip mAb solution onto the tissue section and incubate at RT for 30 min.


 SDS-PAGE
analysis of
purified, BSA-
free ...

Formula

0.2 mg/ml in 1X PBS with 0.1 mg/ml BSA (US sourced) and 0.05% sodium azide

Isotype

Rabbit IgG, kappa

Clonality

Recombinant

Purity

Protein A affinity chromatography

Uniprot ID
[Q5XXA6](#)
Hazard Information

This recombinant TMEM16A antibody is available for research use only.

Entrez
[55107](#)
Dilution Range

Immunohistochemistry (FFPE): 1-2ug/ml for 30 min at RT

Expiration Date

12 months from date of receipt.