
Product Datasheet

Ornithine Decarboxylase Antibody / ODC1 (orb606921)

Description

Recognizes a 53kDa protein, identified as the



an...

Species/Host

Rabbit

Reactivity

Human

Conjugation

Unconjugated

Tested Applications

IHC-P, WB

Immunogen

Recombinant human protein was used as the immunogen for the recombinant ODC1 antibody.

Preservatives

0.2 mg/ml in 1X PBS with 0.1 mg/ml rAlbumin (US sourced) and 0.05% sodium azide

Storage

Store the recombinant ODC1 antibody at 2-8°C (with azide) or aliquot and store at -20°C or colder (without azide).

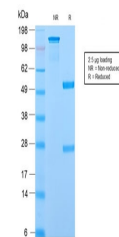
Note

For research use only

Application notes

Optimal dilution of the recombinant ODC1 antibody should be determined by the researcher.1. The prediluted format is supplied in a dropper bottle and is optimized for use in IHC. After epitope retrieval step (if required), drip mAb solution onto the tissue section and incubate at RT for 30 min.

IHC staining of FFPE human prostate tiss...



SDS-PAGE analysis of purified, BSA-free ...

Formula

0.2 mg/ml in 1X PBS with 0.1 mg/ml BSA (US sourced) and 0.05% sodium azide

Isotype

Rabbit IgG, kappa

Clonality

Recombinant

Purity

Protein A affinity chromatography

Uniprot ID

P11926

Hazard Information

This recombinant ODC1 antibody is available for research use only.

Dilution Range

Immunohistochemistry (FFPE): 0.25-0.5ug/ml for 30 min at RT, Western blot: 1-2ug/ml

Expiration Date

12 months from date of receipt.



Western blot testing of human PC-3 cell ...