
Product Datasheet

MUC1 Antibody / Mucin-1 (orb606916)

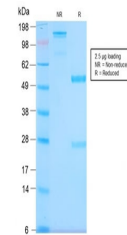
Description

This MAb recognizes full-length MUC1 in a glycosylation-

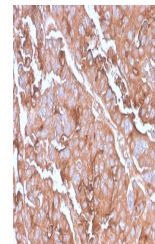
| | |
|----------------------------|--|
| Species/Host | Rabbit |
| Reactivity | Human |
| Conjugation | Unconjugated |
| Tested Applications | IHC-P, WB |
| Immunogen | Full length human protein was used as the immunogen for this recombinant MUC1 antibody. |
| Preservatives | 0.2 mg/ml in 1X PBS with 0.1 mg/ml rAlbumin (US sourced) and 0.05% sodium azide |
| Storage | Store the recombinant MUC1 antibody at 2-8°C (with azide) or aliquot and store at -20°C or colder (without azide). |
| Note | For research use only |
| Application notes | Titration of the recombinant MUC1 may be required due to differences in protocols and secondary/substrate sensitivity.1. The prediluted format is supplied in a dropper bottle and is optimized for use in IHC. After epitope retrieval step (if required), drip mAb solution onto the tissue section and incubate at RT for 30 min. |
| Formula | 0.2 mg/ml in 1X PBS with 0.1 mg/ml BSA (US sourced) and 0.05% sodium azide |
| Isotype | Rabbit IgG, kappa |
| Clonality | Recombinant |
| Purity | Protein A affinity chromatography |
| Uniprot ID | P15941 |
| Hazard Information | This recombinant MUC1 antibody is available for research use only. |
| Dilution Range | Immunohistochemistry (FFPE): 1-2ug/ml for 30 min at RT,Western blot: 1-2ug/ml |
| Expiration Date | 12 months from date of receipt. |



Western blot testing of human MCF7 cell ...



SDS-PAGE analysis of purified, BSA-free ...



IHC testing of FFPE human colon carcinom...