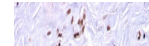

Product Datasheet

Mammaglobin A Antibody / SCGB2A2 (orb606912)

Description

Mammaglobin, also called Secretoglobin family 2A



glycoprote...

Species/Host

Rabbit

Reactivity

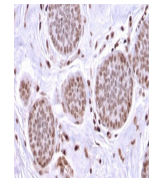
Human

Conjugation

Unconjugated

Tested Applications

IF, IHC-P, WB



IHC testing of FFPE human breast carcino...

Immunogen

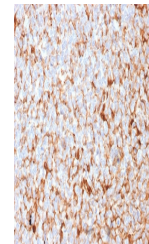
Full length recombinant human protein was used as the immunogen for the recombinant Mammaglobin antibody.

Preservatives

0.2 mg/ml in 1X PBS with 0.1 mg/ml rAlbumin (US sourced) and 0.05% sodium azide

Storage

Store the recombinant Mammaglobin antibody at 2-8°C (with azide) or aliquot and store at -20°C or colder (without azide).



IHC testing of FFPE human breast carcino...

Note

For research use only

Application notes

Optimal dilution of the recombinant Mammaglobin antibody should be determined by the researcher.1. The prediluted format is supplied in a dropper bottle and is optimized for use in IHC. After epitope retrieval step (if required), drip mAb solution onto the tissue section and incubate at RT for 30 min.

Formula

0.2 mg/ml in 1X PBS with 0.1 mg/ml BSA (US sourced) and 0.05% sodium azide

Isotype

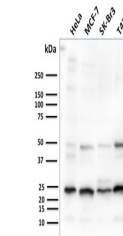
Rabbit IgG, kappa

Clonality

Recombinant

Purity

Protein A affinity chromatography

Uniprot ID
[Q13296](#)


Western blot testing of human HeLa, MCF-

Hazard Information

This recombinant Mammaglobin antibody is available for research use only.

Dilution Range

Western blot: 1-2ug/ml, Immunohistochemistry (FFPE): 0.1-0.2ug/ml for 30 min at RT, Immunofluorescence: 1-2ug/ml

Expiration Date

12 months from date of receipt.