

---

## Product Datasheet

### Ki67 Antibody (orb606911)

**Description**

Ki67 antigen is a nuclear, non-histone protein that is present


**Species/Host**

Mouse

**Reactivity**

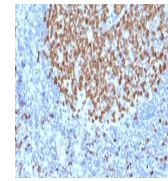
Human

**Conjugation**

Unconjugated

**Tested Applications**

FACS, IHC-P, WB



IHC testing of FFPE human tonsil stained...

**Immunogen**

A portion of amino acids 2293-2478 was used as the immunogen for the Ki67 antibody.

**Preservatives**

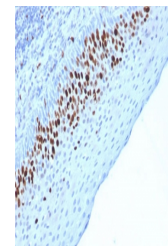
0.2 mg/ml in 1X PBS with 0.1 mg/ml rAlbumin (US sourced) and 0.05% sodium azide

**Storage**

Store the Ki67 antibody at 2-8°C (with azide) or aliquot and store at -20°C or colder (without azide).

**Note**

For research use only



IHC testing of FFPE human skin stained W...

**Application notes**

Optimal dilution of the Ki67 antibody should be determined by the researcher.1. The prediluted format is supplied in a dropper bottle and is optimized for use in IHC. After epitope retrieval step (if required), drip mAb solution onto the tissue section and incubate at RT for 30 min.

**Formula**

0.2 mg/ml in 1X PBS with 0.1 mg/ml BSA (US sourced) and 0.05% sodium azide

**Isotype**

Mouse IgG1, kappa

**Clonality**

Monoclonal

**Purity**

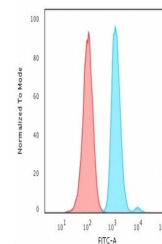
Protein G affinity chromatography

**Uniprot ID**

**P46013**

**Hazard Information**

This Ki67 antibody is available for research use only.



FACS testing of human HeLa cells with Ki...

**Dilution Range**

Western blot: 1-2ug/ml, Flow cytometry: 1-2ug/million cells, Immunohistochemistry (FFPE): 1-2ug/ml for 30 min at RT

**Expiration Date**

12 months from date of receipt.