

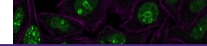
---

## Product Datasheet

### Ki67 Antibody (orb606909)

**Description**

Ki67 antigen is a nuclear, non-histone protein that is


**Species/Host**

Mouse

**Reactivity**

Human

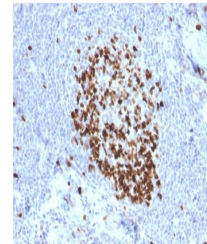
**Conjugation**

Unconjugated

**Tested Applications**

FACS, IF, IHC-P

Immunofluorescent staining of human HeLa...


**Immunogen**

A portion of amino acids 2293-2478 was used as the immunogen for the Ki-67 antibody.

**Preservatives**

0.2 mg/ml in 1X PBS with 0.1 mg/ml rAlbumin (US sourced) and 0.05% sodium azide

**Storage**

Store the Ki-67 antibody at 2-8°C (with azide) or aliquot and store at -20°C or colder (without azide).

**Note**

For research use only

**Application notes**

Optimal dilution of the Ki-67 antibody should be determined by the researcher.1. The prediluted format is supplied in a dropper bottle and is optimized for use in IHC. After epitope retrieval step (if required), drip mAb solution onto the tissue section and incubate at RT for 30 min.

IHC testing of FFPE human tonsil stained...

**Formula**

0.2 mg/ml in 1X PBS with 0.1 mg/ml BSA (US sourced) and 0.05% sodium azide

**Isotype**

Mouse IgG2b, kappa

**Clonality**

Monoclonal

**Purity**

Protein G affinity chromatography

**Uniprot ID**

**P46013**

**Hazard Information**

This Ki-67 antibody is available for research use only.

**Dilution Range**

Flow cytometry: 1-2ug/million cells, Immunofluorescence: 1-2ug/ml, Immunohistochemistry (FFPE): 1-2ug/ml for 30 min at RT

IHC testing of FFPE human tonsil stained...

**Expiration Date**

12 months from date of receipt.