
Product Datasheet

KRT15 Antibody / Cytokeratin 15 (orb606907)

Description

Keratins are a family of intermediate filament proteins

Species/Host

Mouse

Reactivity

Human

Conjugation

Unconjugated

Tested Applications

FACS, IHC-P

Immunogen

Recombinant human protein was used as the immunogen for the Cytokeratin 15 antibody.

Preservatives

0.2 mg/ml in 1X PBS with 0.1 mg/ml rAlbumin (US sourced) and 0.05% sodium azide

Storage

Store the Cytokeratin 15 antibody at 2-8°C (with azide) or aliquot and store at -20°C or colder (without azide).

Note

For research use only

Application notes

Optimal dilution of the Cytokeratin 15 antibody should be determined by the researcher.1. The prediluted format is supplied in a dropper bottle and is optimized for use in IHC. After epitope retrieval step (if required), drip mAb solution onto the tissue section and incubate at RT for 30 min.

Formula

0.2 mg/ml in 1X PBS with 0.1 mg/ml BSA (US sourced) and 0.05% sodium azide

Isotype

Mouse IgG2b, kappa

Clonality

Monoclonal

Purity

Protein G affinity chromatography

Uniprot ID

P19012

Hazard Information

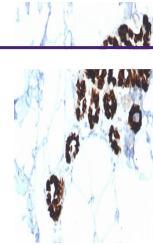
This Cytokeratin 15 antibody is available for research use only.

Dilution Range

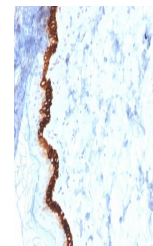
Flow cytometry: 1-2ug/million cells, Immunohistochemistry (FFPE): 1-2ug/ml for 30 min at RT

Expiration Date

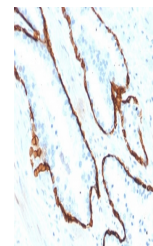
12 months from date of receipt.



IHC testing of FFPE human basal cell carcinoma tissue.



IHC testing of FFPE human basal cell carcinoma tissue.



IHC testing of FFPE human prostate carcinoma tissue.