

---

## Product Datasheet

### Phospho-JUN Antibody (pT91/93) (orb606906)

**Description**

This gene is the putative transforming gene of avian


**Species/Host**

Mouse

**Reactivity**

Human

**Conjugation**

Unconjugated

**Tested Applications**

FACS, IF, IHC-P, WB

IHC testing of FFPE human cervical tumor...

**Immunogen**

The amino acids surrounding phosphorylated T91 and T93 were used as the immunogen for the phospho-c-Jun antibody.

**Preservatives**

0.2 mg/ml in 1X PBS with 0.1 mg/ml rAlbumin (US sourced) and 0.05% sodium azide

**Storage**

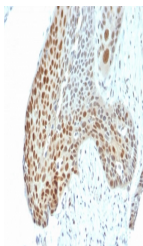
Store the phospho-c-Jun antibody at 2-8°C (with azide) or aliquot and store at -20°C or colder (without azide).

**Note**

For research use only

**Application notes**

Optimal dilution of the phospho-c-Jun antibody should be determined by the researcher.1. The prediluted format is supplied in a dropper bottle and is optimized for use in IHC. After epitope retrieval step (if required), drip mAb solution onto the tissue section and incubate at RT for 30 min.



IHC testing of FFPE human cervical tumor...

**Formula**

0.2 mg/ml in 1X PBS with 0.1 mg/ml BSA (US sourced) and 0.05% sodium azide

**Isotype**

Mouse IgG1, kappa

**Clonality**

Monoclonal

**Purity**

Protein G affinity chromatography

**Uniprot ID**

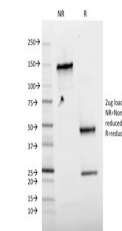
**P05412**

**Hazard Information**

This phospho-c-Jun antibody is available for research use only.

**Dilution Range**

Flow cytometry: 0.5-1ug/million cells, Immunofluorescence: 1-2ug/ml, Western blot: 0.5-1ug/ml, Immunohistochemistry (FFPE): 0.5-1ug/ml for 30 min at RT



SDS-PAGE analysis of purified, BSA-free ...

**Expiration Date**

12 months from date of receipt.