
Product Datasheet

Kappa Light Chain Antibody (orb606903)

Description

This mAb is specific to kappa light chain of

lambda ...

Species/Host

Rabbit

Reactivity

Human

Conjugation

Unconjugated

Tested

IHC-P

Applications
Immunogen

Recombinant human Ig kappa chain was used as the immunogen for this recombinant Kappa antibody.

Preservatives

0.2 mg/ml in 1X PBS with 0.1 mg/ml rAlbumin (US sourced) and 0.05% sodium azide

Storage

Store the recombinant Kappa antibody at 2-8°C (with azide) or aliquot and store at -20°C or colder (without azide).

Note

For research use only

Application notes

The optimal dilution of the recombinant Kappa antibody for each application should be determined by the researcher.1. The prediluted format is supplied in a dropper bottle and is optimized for use in IHC. After epitope retrieval step (if required), drip mAb solution onto the tissue section and incubate at RT for 30 min.

Formula

0.2 mg/ml in 1X PBS with 0.1 mg/ml BSA (US sourced) and 0.05% sodium azide

Isotype

Rabbit IgG, kappa

Clonality

Recombinant

Purity

Protein A affinity chromatography

Uniprot ID

P01601, P01834

Hazard
Information

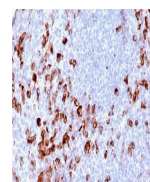
This recombinant Kappa antibody is available for research use only.

Dilution Range

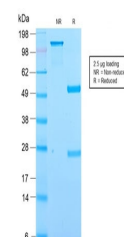
Immunohistochemistry (FFPE): 1-2ug/ml for 30 min at RT

Expiration Date

12 months from date of receipt.



IHC testing of FFPE human tonsil tissue ...



SDS-PAGE analysis of purified, BSA-free ...